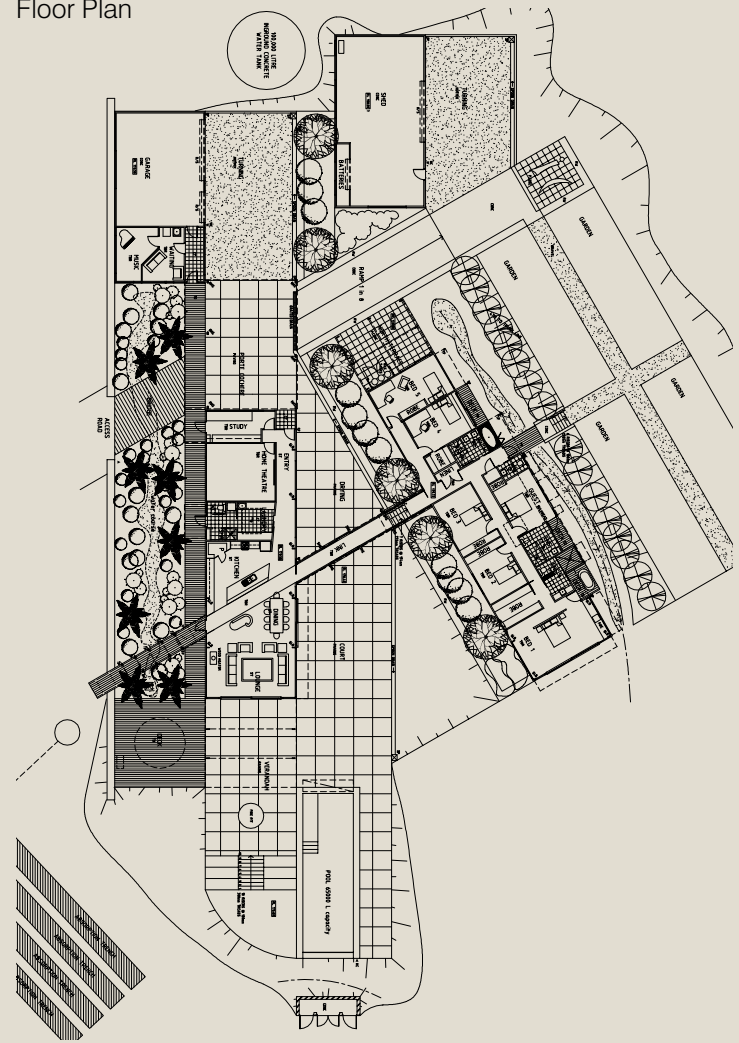


Floor Plan



The Peak of Perfection

Blending contemporary architectural features with environmental sustainability and breathtaking views, this rural retreat is a monument to quality design and expert workmanship.





Nathan and Sherinah Peck of Impeckable Constructions have created for themselves a truly stunning country home, reaching towards the magnificent views in all its architectural glory. They wanted a residence that was functional for their young family, provided space for elegant entertaining, and exemplified sustainable design, as it would be a demonstration project for their company's capabilities.

The unique and breathtaking mountaintop site of 22 hectares enjoys a commanding outlook of the magnificent Southern Illawarra coastline and the hinterland around Jamberoo. As such, Nathan and Sherinah wanted the house to capture the available vistas from every point.

What resulted after consultation with Nowra Architect Colin Irwin of BHI was a home comprising two pavilions for living and sleeping, lightly connected by a glazed walkway that frames the protected pool and courtyard, opening out to the view. A simple and honest aesthetic flows through the property and allows the stunning natural environment to dominate.

The isolation and privacy of the home is used to full advantage with plenty of glazing and retractable walls. Hence, the strong visual connection between internal and external spaces allows residents and visitors alike to appreciate the beauty and uniqueness of the site's dramatic mountaintop location.

Warm spotted gum flooring spreads throughout the home's simple and sophisticated interiors, framed by abundant views of the surrounding green landscape. The voluminous kitchen, living and dining areas open out to a gorgeous deck space, sheltered by the impressive cantilevering roof that gives the home much of its unique external identity.

While the home enjoys four double bedrooms and guest accommodation, it is the master suite that exudes luxury in its truest form, with an entire wall opening the space to the landscape. The view can even be enjoyed from the double shower to the ensuite or when soaking in the outdoor tub on the deck.

With 200,000 litres of water storage and 120 solar panels, the home is an admirable example of self-sufficiency, with all water collected, stored and treated onsite, and all power generated by the solar panels. Orientation and ventilation maintain comfortable temperature all year round.



Impeckable Constructions
PO Box 188,
Jamberoo NSW 2533
Australia
T: +61 409 302 407
www.impeckableconstructions.com.au

Photography by Steve Conti
Words by Jade de Souza

