



Pinnacle of Success

STORY **LESLEY ROULSTON** PHOTOGRAPHY **STEVE CONTI**

WHEN NATHAN AND SHERINAH PECK SAW THE 22 HECTARES OF VIRGIN LAND AT YELLOWROCK, WITH ITS STUNNING VALLEY VIEWS STRETCHING FROM JAMBEROO THROUGH TO GERROA, THEY KNEW IT WAS THE PERFECT SPOT TO BUILD A SPECTACULAR HOME.



“OUR HOUSE IS EASY TO LIVE IN AND DOESN'T REQUIRE MUCH FUSS. WE CAN LIVE IN THE TOP SECTION AND NOT DISTURB ANYONE DOWNSTAIRS,”

Nathan and Sherinah, from South Coast building company Impeckable Constructions, consulted Colin Irwin of BHI Architects in designing a home that was modern and functional as well as eco-friendly. The Pecks wanted to capitalise on the northerly aspect of the site as well as capture the awesome views from as many vantage points throughout the house as possible.

The collaborative result is Pinnacle, an elegant and contemporary six-bedroom home, which as it turns out, has been aptly named having earned recent accolades from the Master Builders Association, taking the company to new heights. At the prestigious MBA 'Excellence in Regional Building' Awards, Pinnacle was the winner in two major categories – Best Contract Home Over \$1Million and Best Sustainable Energy Home. It's not surprising that Pinnacle has been recognised by industry leaders as having standout qualities, its innovative design cleverly partitioning the home into two connecting wings, distributed over one easy-living level. The house has been deemed to tick all the boxes on the eco front, with 120 solar

Opposite page: The solar heated swimming pool economically extends the swimming season. **Above:** The main bedroom was designed to enjoy the amazing valley views. **Right:** The enclosed walkway cleverly separates the bedrooms from the main living areas of the house.

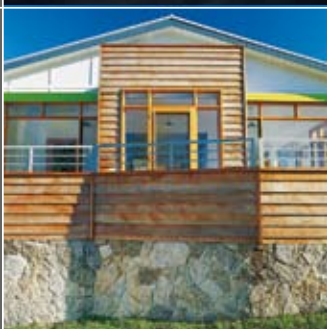




Opposite page, clockwise from top: Both the pool and walkway enjoy exquisite valley views. A glass walkway connects the bedrooms to the living areas. High ceilings and clean lines help provide a spacious air to the kitchen. This page: The outdoor bathtub is a favourite spot for stargazing.



ARCHITECTURE
INTERIORS
URBAN DESIGN
HERITAGE
SUSTAINABLE



inspire
create
enjoy

architecture
for the
east coast
of australia

www.bhia.com.au



panels and an 180,000-litre water tank system rendering the house self sufficient for all of its energy needs.

The first wing is undoubtedly the heart of the home, with spotted gum flooring providing an immediate feeling of warmth upon entering. A hallway, discreetly lined with runway lighting, leads to a spacious kitchen, dining and living area framed by an abundant green landscape so tranquil and lush it's obvious only Mother Nature herself could have painted it.

The kitchen has all the modern fittings such as stainless steel appliances and a professional barista-inspired coffee machine that Sherinah loves to test her skills on, but it is the café-style breakfast bar that has been astutely placed to the right of the space that is her personal haven. The design allows her to look out each morning to the peaceful oasis outside and helps provide a calming start to her day.

The home theatre room is popular with the whole family, a huge wall-mounted projector screen and surround-sound system are complemented by comfy lounges and scattered beanbags to deliver a relaxed cinematic atmosphere.

Left: A low maintenance undercover deck extends the family living area.

Above: The gutters and down pipes have been cleverly concealed by a

parapet. Top right: Decadent furniture finishes off the living room. **Right:** The double shower features push-out windows, timber flooring and natural stone tiles for easy cleaning.



South Coast Living

South Coast Style 57



Specialists in the construction of architecturally designed homes



impeckable constructions

Ph: 0409 302 407
impeckableconstructions.com.au



An enclosed glass walkway travelling through to the second wing reveals an inground pool to the right and to the left a thriving herb garden and a selection of citrus trees. The garden on the whole took nine months to complete, the stone walling especially selected to provide a classic touch that "would never date". The bedrooms comprise most of the second wing and have been advantageously designed to provide a teenager retreat that is separate from the main living areas.

The house has been decorated both inside and out in natural finishes so that it blends quietly in with the peaceful valley setting. It's the unique aspects of design such as the roofline with gutters and downpipes cleverly concealed and the wine cellar-cum-bushfire bunker that create an interesting profile and give the house its innovative edge.

Pinnacle is currently offered for sale through Elders Jamberoo, telephone 02 42 360891 for more information. ■

www.impeckableconstructions.com.au

Left: Outdoor dining at its best. **Above:** The wooden panels on the ceiling function as an attractive feature as well as a sound buffer. **Top right:** Modern finishes give the bathroom a sleek and stylish feel. **Right:** Sherinah has used accessories such as this leather chair and driftwood style lamp to create a natural ambience.

